

EXQUISITE SIZE POWERFUL FUNCTION

SR SERIES LOGIC CONTROLLER

Ver: 3.0



SUPER INTELLIGENT CONTROLLER



Remote Control



Removable HMI (LCD Panel)



Telephone and Voice Module

SUPER INTELLIGENT CONTROLLER

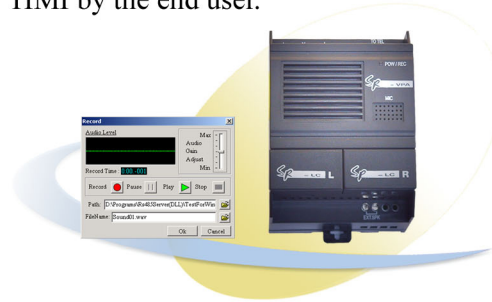
Super Remote Control Function

Industrial wireless remote control module, offer 6 wireless remote control input points.



Super Voice Function

Telephone alarm automatically. The voice message and telephone number can be changed via the super HMI by the end user.



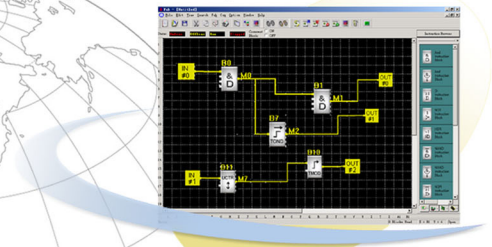
Super HMI function

Removable LCD (act as HMI), with a separate installation mounting rack, can be easily mounted on the panel of cabinet, display alarm message and real value, the user can change the preset value via the LCD.



Super Programming Function

Friendly programming software (Super CAD/ Super CAD2005) which can be used very easily, offer the super simulation function.



Super Extension Function

SR series products have 20 I/O extension module, can be extended to 82 I/O (50 Inputs and 32 outputs)



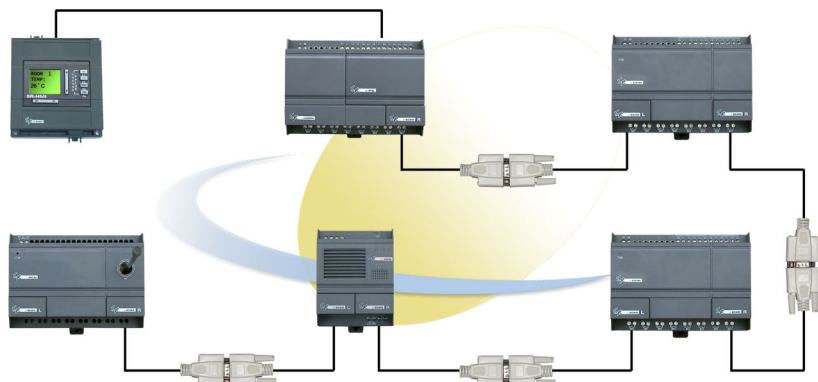
Super Separate Installation Function

The user can install the SR inside the cabinet and mount the HMI (LCD) on the front panel of the cabinet.



Super flexible connection Function

SR host module can be connected to extension modules, voice module and remote control module via SR-ECBA/SR-ECBD to prolong the installation distance.



SR Parts

Removable LCD Panel Removable HMI and SR-WRT Panel



General Technical Specifications

Supply voltage	AC100V-240V /DC 12-24V
Output current	Resistor load 10A Sensitive load 2A
Programming method	FBD
Program Capability	128 Blocks
Counter	128
Timer	128
RTC	128 Switches
Maximum I/O	82
LCD display	4×10 Characters
Work temperature	-20° C ~ +70° C

Function

- Wireless remote control
- Virtual key
- Removable HMI and WRT
- Easily change preset value
- Display alarm message
- Telephone and voice alarm
- Can be extended to 82 I/O
- 8 channel analogue input
- Telephone remote control

SR-VPA/SR-VPD Voice Telephone Function Module



SR-20ERA/SR-20ERD SR-20ETD/SR-20EGD Extension I/O Module



SR-22MRAC 22 I/O CPU Module



SR-CP Side plug RS232 Cable



SR-DCP Front plug RS232 Cable



SR-DUSB Front plug USB Cable



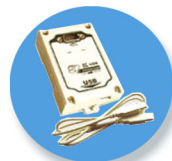
SR-EHC HMI Separate Installation Mounting Unit



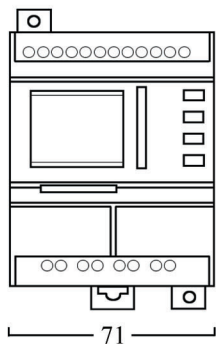
SR-EANT Prolong separate Antenna



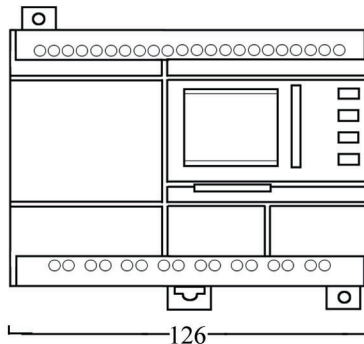
AF(SR)-USB USB/RS232 convertor



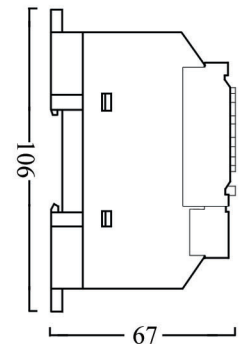
Installation Dimension



SR-12 Series(mm)



SR-22 Series(mm)/SR-20 Series(mm)



Specification

Item	Type	Power	Input	Output	Remark
1	SR-12MRAC	AC100-240V	8 points AC input	4 points relay output	with real-time clock
2	SR-12MRDC	DC12-24V	8 points DC input(with 6 points analog)	4 points relay output	
3	SR-12MTDC	DC12-24V	8 points DC input(with 6 points analog)	4 points transistor output(equivalent NPN)	
4	SR-12MGDC	DC12-24V	8 points DC input(with 6 points analog)	4 points transistor output(equivalent PNP)	
5	SR-22MRAC	AC100-240V	14 points AC input	8 points relay output	
6	SR-22MRDC	DC12-24V	14 points DC input(with 8 points analog)	8 points relay output	
7	SR-22MTDC	DC12-24V	14 points DC input(with 8 points analog)	8 points transistor output(equivalent NPN)	
8	SR-22MGDC	DC12-24V	14 points DC input(with 8 points analog)	8 points transistor output(equivalent PNP)	
9	SR-20ERA	AC100-240V	12 points AC input	8 points relay output	20 points extended module
10	SR-20ERD	DC12-24V	12 points DC input	8 points relay output	
11	SR-20ETD	DC12-24V	12 points DC input	8 points transistor output(equivalent NPN)	
12	SR-20EGD	DC12-24V	12 points DC input	8 points transistor output(equivalent PNP)	
13	SR-VPA	AC100-240V	Telephone and voice module, auto-dialing ,alarming and remote control		
14	SR-VPD	DC12-24V			
15	SR-RCA	AC100-240V	Remote control and receiving module		
16	SR-RCD	DC12-24V			
17	SR-TC	3VDC(two units No.5 batteries)	Remote control transmitter		
18	SR-HMI-L	Monitoring and operating panel	Up to 64 pages human-interface,display current value and change pre-set value (with the wide-range temperature type -20°C~70°C)		
19	SR-HMI-B	Monitoring and operating panel	Up to 64 pages human-interface,display current value and change pre-set value (with the wide-range temperature type -20°C~70°C and backlight display)		
20	SR-WRT	Programming panel	Conveniently programming for user in the local field		
21	SR-CP	Communication cable	Communication cable between SR and PC (profile plug type)		
22	SR-DCP	Communication cable	Communication cable between SR and PC (frontispiece plug type)		
23	SR-CBA	AC connecting bridge	To connect SR host and the other module		
24	SR-CBD	DC connecting bridge			
25	SR-EHC	Connection set of SR-HMI	Remotely connect SR host and SR-HMI to place the SR machine inside the cabinet and put the SR-HMI outside for observation and operation		
26	SR-ECBA	AC prolongable connecting bridge	To remotely connect SR host and the extended module etc.		
27	SR-ECBD	DC prolongable connecting bridge			
28	SR-EANT	Prolongable antenna	Prolongable connecting antenna of SR-RCA/SR-RCD		
29	SR-AUD	Recording line	The wires between PC sound card and the SR-VPA/SR-VPD		
30	SR-PC	The general cover	Instead of SR-HMI,reducing your cost		
31	SR-LC	Cover for the communication port	Avoiding dust, the left cover(SR-LC L) and the right cover(SR-LC R)		
32	AF(SR)-USB	Communication cable	USB/RS232 convertor(DIN installation type)		
33	SR-DUSB	Communication cable	The cable between SR and PC USB port		